



Newsletter

Head Teacher: Ms Louise Willard

Elm Grove, Brighton, BN2 3ES
Telephone: 01273 708004 Fax: 01273 708300
admin@elmgrove.brighton-hove.sch.uk
www.elmgrove.brighton-hove.sch.uk

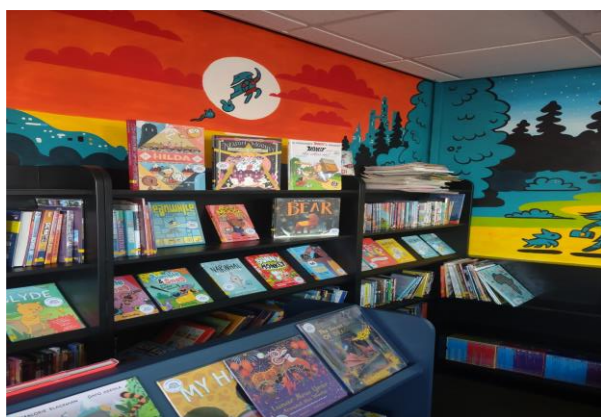
Number 9 – 19th January 2024

Next INSET
Monday 3rd June

Elm Grove Graphic Novel Library is officially open

We are thrilled to announce that our new graphic novel library opened for business this week. Year 6 pupils were the first children to get to choose a book and were really excited to do so.

Massive thanks to Mr James, the PTA and everyone who raised money and helped to make Mr James' dream a reality. So many children will benefit from all of the lovely new books for years to come. The money raised from the new comic club will be used to continually add books to the library shelves.



Possible employee funding idea – along with a number of local schools, Elm Grove has provided pupil and family counselling for many years through 'Held in Mind'.

The team at Held in Mind are very mindful how much the schools and community need their help and support, but ever tightening school budgets are making it harder and harder to fund.

With this in mind they are planning to write to a number of local and national businesses to see if they have any funding available to help the families in this neighbourhood. Businesses often carry out their corporate social responsibility by offering grants to non-profit making organisations and if Held in Mind can link this to their community they may be more keen to support the organisation and in turn our families. It has to be worth a try at least.

They have drafted the letter, which is attached for your information. We thought it would be useful to share with our community to find out if there are any businesses in our area which any of our families may have a connection with through their own employment or contacts.

Please let Held in Mind, or the school, know of any organisations, large or small that you think may help (details on the attached letter). Let us know and we will get a letter out to them. Fingers crossed we might be able to find some valuable funding for Held in Mind's work at Elm Grove and other local schools.

Parent consultation - Friday 26th January at 10am.

The topic of discussion will be thinking about how parents and carers from minority groups/who are less represented in the school (such as those with a disability or where English is an additional language) can be better supported by the school and community.

Please email Louise Willard if you are interested in attending (louisewillard@elmgrove.brighton-hove.sch.uk).

Elm Grove Primary School is committed to safeguarding and promoting the welfare of children and this commitment is reflected in all relevant policies and practice.

Swimming timetable for the Spring/Summer terms

Term	Start Date	End Date	Classes
Spring 1	Thursday 4th January	Thursday 8 th February	Holly, Cedar, Rowan & Oak
Spring 2	Thursday 22nd February	Thursday 28 th March	Horse Chestnut, Cypress, Redwood & Elder
Summer 1	Thursday 18 th April	Thursday 23 rd May	Holly, Cedar, Rowan & Oak
Summer 2	Thursday 6 th June	Thursday 18 th July	Horse Chestnut, Cypress, Redwood & Elder

Swimming costs £9 per the half term that your child is swimming. This is payable via ParentPay.

We rely on parents and carers payments for as the school does not have sufficient funds to subsidise the cost of hiring the swimming pool.

Please contact the school office if you have any issues with ParentPay or the payments.



KS2 snacks - Please remember to provide a healthy mid-morning snack for pupils in KS2 (years 3 – 6). A government initiative provides fruit for pupils in EYFS & KS1 (years R - 2)

Public Health guidance suggests:

Starchy carbohydrates such as breadsticks, oatcakes etc are a great source of energy. Raisins are a good and healthier alternative to sweets, however we advise to serve them with a meal (e.g. wrap/sandwich and raisins) for better oral health. We also advice to serve raisins in moderation (just a small quantity) due of the high concentrated amount of sugar, however they are a healthy snack.

There are also more resources on the website.

Other good alternatives: plain popcorn, toasted pitta, fruit and veggie sticks – there are more here <https://www.nhs.uk/healthier-families/food-facts/healthier-snacks/>



Invite to singing assemblies – Parents and carers of pupils in Reception – Year 4 are invited to attend one of the children's regular singing assemblies on Thursday 8th February.

Reception, Year 1 & Year 2 = 10am
Year 3 & Year 4 = 12 noon

This will be held in the main school hall



Doors open at 8.50am School starts at 9.00am

A reminder from the office team that children need to be in class by 9am to get a registration mark and order their lunch otherwise they have to sign in at the office.

Please can parents make every effort to arrive on time as it's disruptive for the class teachers but also embarrassing for children walking in late. We encourage a calm transition when coming in to school for a positive start to the day

Elm Grove Primary School is committed to safeguarding and promoting the welfare of children and this commitment is reflected in all relevant policies and practice.

To all parents/ carers of autistic children or those who have an active referral in place,

Just Right workshop

Tuesday 30th January 9.15am-11.00am

The workshop is for parents and carers of autistic young people or for those with children on the pathway.

The workshop is being held at Elm Grove school and will be delivered by a Family Support Worker from the BHISS Autism and Language Team and co-hosted by Carla Kemp - SENDCo.

Just Right is a system, developed here in Brighton & Hove, that uses colour zones to help children more effectively communicate how they are feeling and understand what makes them feel 'just right'. We will discuss how the system is being used in schools and how it can be adapted for use at home.

Please email: admin@elmgrove.brighton-hove.sch.uk to reserve your space.



Elm Grove has registered for pupils to participate in the Royal Academy Summer Show. You may want to enter one of your child's pieces of art.

[Young Artists' Summer Show | Royal Academy](#)

The Royal Academy Young Artists' Summer Show is a wonderful opportunity for UK-based artists and schools to engage creatively in the making and sharing of a piece of artwork that truly expresses their own voice. There is no theme and artists aged 4-19 can submit a wide range of works which may include drawing, painting, printing, photography, sculpture, textile, fashion, animation, video, or surprise us!

- The deadline to submit artwork is 27 March 2024 at 5pm. You can edit submissions until this deadline
- You can submit one artwork per student
- For each submission you'll need one image of the artwork plus details including a title, medium and a short description
- You can save the submission as a draft and submit it at a later date if you need more time
- Questions? See our [FAQs](#).

Year 5 & Let's Dance information –

Friday 9th Feb - Last day Year 5 cake sale to raise money for our WW2 experience workshop.

Redwood have started learning Ukulele on Tuesdays and parents of Redwood are invited in on **Tuesday 26th March** at 11.30am for their performance.

Also, on the **26th March** all Year 5 parents are invited in to celebrate Year 5's VE day in the afternoon from 1.45pm onwards. There will be more information regarding this closer to the time.

Let's Dance - parents need to buy tickets from the office for the performance which will be on Friday **22nd March**. Each child is allocated 2 tickets. If a parent/carer wishes to buy more, they need to purchase those from the Brighton Dome. A ping will be sent home with more information.

Also, if we have parents volunteers who wish to come in and reads with our Year 5's please get in touch with Alice Stimson (Year 5 Redwood class). (via: admin@elmgrove.brighton-hove.sch.uk)

Homework – please look out for homework grids on: Friday 26.1.24
Friday 9.2.2024

The homework grids will be uploaded onto the homework page of the school website: [Homework – Elm Grove Primary School, Brighton](#)

Elm Grove Primary School is committed to safeguarding and promoting the welfare of children and this commitment is reflected in all relevant policies and practice.

DIARY DATES

Date	Event
Friday 26 th January	Parent consultation group
Friday 26 th January	PTA disco
Friday 2 nd February	PTA disco
Thursday 8 th February	Parent & carer invite to singing assemblies
Friday 9 th February	End of half term Y5 PTA cake sale
Monday 19 th February	Children return to school
Tuesday 27 th February	Parents Evening
Wednesday 28 th February	Parents Evening
Wednesday 6 th March	Book Bonanza
Thursday 7 th March	World Book Day
Friday 8 th March	Book Day dressing up day
Friday 22 nd March	Let's Dance performance
Tuesday 26 th March	Redwood parents ukulele performance invite Year 5 parents invited in to celebrate Year 5's VE day

Given the ongoing terrible situation in Gaza, children may feel worried and anxious by what they see and hear.

Some advice when talking to children could be to:

- Encourage them to share their worries
- Let them know its normal to feel upset
- Remind them to do things that make them happy
- Remember that it's rare

These websites may be helpful for supporting children's worries -

- [Advice if you're upset by the news - BBC Newsround](#)
- [NewsWise for families | The Guardian Foundation](#)

Internet Safety FOR FAMILIES



Internet Matters - Resources for parents and carers: [My Family's Digital Toolkit - tailored online safety advice | Internet Matters](#)

The charity produces a wealth of practical information and guidance on keeping children and young people safer online across four age ranges from 0-4 yrs to 14+ with guidance on for instance setting controls for devices and platforms.



GOLDEN BOOK MERITS

Beech	Megan, Lola, Jack, Albie, Caspian, Greta
Birch	Yuki, Gethin, Esmail, Zofia, Morris, Imogen
Baobab	Aggie, Felix, Joshua, Autumn, Leah, Sebi
Bonsai	Isla, Cassie, Charlotte, Leo, Rudy, Ellis
Holly	Eleanor, Jenny, Dotti, Sathira, Ada, Mya
Horse Chestnut	Jessica, Jackson, Ibuki, Estelle, Raven, Talula
Cedar	Freddie K, Esme, Coen, Otis, Stanley, Joey
Cypress	Momo, Raya, Amari, Anne, Jahmari, Sam W
Redwood	Amelia, Fred, Eddie, Teddy, Mia, Theo
Rowan	Diggory, Ted, Marcus, Leto, Markos, Sylvie
Oak	Nathaniel, Kimberly, Evan, Joseph, Emily, Oisin
Elder	Amelie, Toulou, Indi, Beau, Isaac, Sam

REMINDER– we have several children in school with nut allergies that are also airborne. Please do not send any foods /packed lunches which contain nuts into school.

NEWSLETTER - Large print copies are available at the office

Louise Wickland

Head teacher

Elm Grove Primary School is committed to safeguarding and promoting the welfare of children and this commitment is reflected in all relevant policies and practice.