

Number 16 – 12th May 2023

Next INSET
 Monday June 5th

Children's Parade - Thank you to *everyone* who worked so hard to make Elm Grove's 'Moomin' Children's Parade contribution such a success last Sunday. The children looked and sounded brilliant – and the Moomins stole the show!



Compassionate leave - I had a very special time with my daughter and her family during my recent compassionate leave. Benjamin (Benny) was born on April 10th in Darwin, Australia. Tommy is now a very proud big brother. I was so delighted to be able to be there and my help was certainly needed!! Thank you for all the support and well wishes received – thank you as well to the staff team who covered so admirably during my absence. It is good to be back now and busy at school again.



Golf tournament - We took a team of Y3/4 golfers to a competition at Blatchington Mill school recently, and for the first time ever we managed to finish in first place! We're now waiting to hear whether or not we will be representing Brighton and Hove in the Sussex championships. Huge congratulations to: Teddy, Elina, Robyn (Cypress); Eliza, Diggory, Harrison, Sylvie (Cedar); Kieran (Horse Chestnut); Dulcie, Sonnie (Holly)

WORKSHOPS FOR PARENTS/CARERS
SUPPORTING CHILDREN AND YOUNG PEOPLE
WITH THEIR
MENTAL HEALTH



16TH MAY

FREE TO ANY
PARENT/CARER
LIVING IN
SUSSEX

5 WORKSHOPS AVAILABLE COVERING:

- › Anxiety
- › Sleep
- › Managing self-harm and suicidal thoughts
- › Autism and challenging behaviour
- › Eating disorders

Workshops will be delivered on
16TH MAY AT 9:30AM, 12:30PM AND 7PM
Workshops last 90 minutes and have a 15 minute
Q&A session (pre-sent questions only)

WANT TO BOOK YOUR TICKETS?

Scan here:



Or visit:

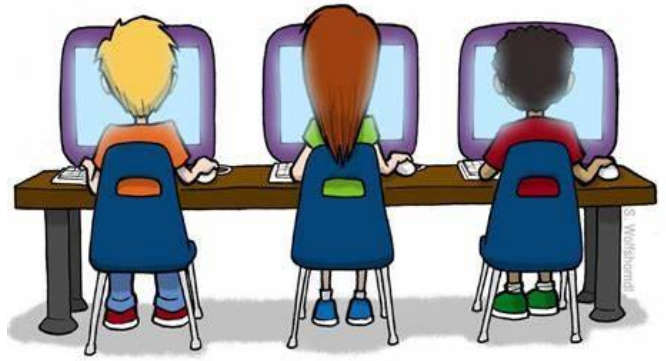
<https://bit.ly/3LvABw5>

FREE DIGITAL GOODY
BAG OF RESOURCES
AND INFORMATION FOR
EACH ATTENDEE

NEED TO GET IN TOUCH?

If you have any questions, please email: Melissa.Baitmansour@spft.nhs.uk

Delivered by Sussex Child & Adolescent Mental Health Services (CAMHS)



Updating the Computer Suite – we are delighted to inform you that all the computers in the computer suite have recently been replaced with new ones. A new inter-active teaching screen has also been installed. This means computing lessons are much more effective.

School Uniform – the school expects all pupils to wear school uniform colours every day (apart from specific non-uniform days).

Elm Grove uniform colours are **green, white and grey** – in any combination. This is also applicable for summer uniform clothing such as shorts and summer dresses.

No **black** items or any items with **logos** please, apart from the optional Elm Grove logo. Uniform should be plain and not in print-style such as camouflage.

Summer Uniform - with the summer term typically comes sunnier weather, so it is important that children are protected with sunscreen before they come to school on hot days. They may also bring a sun hat into school when needed (please make sure these are named). Please do not send children into school in sandals as these are not appropriate footwear for active children and do not protect the feet adequately whilst at school.

Please visit our uniform page on the school website for more uniform information, including our uniform library and how to order new items:

[School Uniform – Elm Grove Primary School, Brighton](#)

Please also visit the uniform library in the Pantry for free second hand items or ask the Inclusion Team if you can't find the size you are looking for.

Top Playground – the new fake grass recently seen on the top playground was donated to the school by Amex. It had been used for the 2022 UEFA European Women's Football Championships and likely destined for landfill if not re-used.

The grass will be properly installed once the borders to secure the edges arrives. The grassed area will provide a softer space for the children to play on.

School Office update – please bear with us at the moment as the school office is currently understaffed. This is due to recent staff changes and waiting for a new team to be fully established. The school is very grateful to all the people who are covering until then. Everyone is doing their best to keep things running as smoothly as possible.

Congratulations to Year 6 pupils for all attending school on time every day this week and approaching their SATs tests with such a positive 'can do' attitude. Everyone tried their best and we can't ask for more than that. Well done!



DIARY DATES

GOLDEN BOOK MERITS	
Apple	Maia, Isaac, Leon
Cherry	Sunny, Karen, Freddie
Beech	Elijah, Esther, Ellie
Birch	Arlo, Harper, Ellie
Baobab	Jessica, Talula, Ursula
Bonsai	Joanna, Honey, Mohammed
Holly	Momo, Anika, Levi
Horse Chestnut	Seb, Otis, Charlie
Cedar	Noah, Theo D, Ted
Cypress	Eli, Lewis, Seb
Redwood	Beau, Javi, Cheyenne
Rowan	Charles, Jaidah, Iscah
Elder	Bethan Re, Vinnie, Nell
Oak	Esme, Ebba, Ben

Date	Event
Tues 9 th – Fri 12 th May	Y6 SATs
Friday 26 th May	End of half term/non-uniform day PTA Y4 cake sale
Monday 5 th June	INSET Day – school closed to pupils
Tuesday 6 th June	Children return to school
Monday 19 th June	PTA comedy night at Komedia
Monday 3 rd July	KS2 sports day – Withdean Stadium
Tuesday 4 th July	Y1 sports day
Wednesday 5 th July	Reception sports day
Friday 7 th July	Y2 sports day
Friday 7 th July	Y6 Secondary transition day
Monday 10 th July	Y5 adventure trip
Friday 14 th July	Annual reports home
Monday 17 th July	'Meet my new teacher' - pupils
Tuesday 18 th July	Open Evening
Thursday 20 th July	End of term/non-uniform day PTA Year Y1 & Reception cake sale



REMINDER– we have several children in school with nut allergies that are also airborne. Please do not send any foods /packed lunches which contain nuts into school.

Homework - please look out for homework grids on:

Friday 12th May
Friday 26th May

Homework grids are now accessible again via the school website: [Homework – Elm Grove Primary School, Brighton](#)

NEWSLETTER - Large print copies are available at the office

Lorise Withdean

Head teacher

Elm Grove Primary School is committed to safeguarding and promoting the welfare of children and this commitment is reflected in all relevant policies and practice.