

# kingfisher



## Eats:

minnows



insects



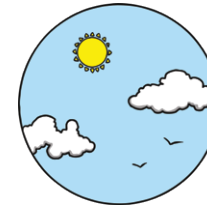
tadpoles



# kingfisher



**Awake:** during the day



# kingfisher



## Lives:

by rivers



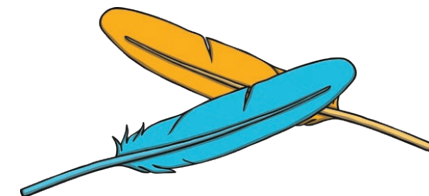
and lakes



# kingfisher



## Feathers:



**barn owl**



**Eats:**

mice

shrews

frogs



**barn owl**



**Awake:** at night



**barn owl**



**Lives:**

in woods

and near fields



**barn owl**



**Feathers:**

