

# Fraction Forest!

## Instructions for Playing:

### You will need:

- Materials board
- Counters
- Dice
- Cards

### Before you play:

- This game is for 2-4 players
- Cut out the dice and glue the tabs together to make a cube.
- Cut the counters out - one for each player.

### How to play:

1. Place the counters on the start square.
2. Take it in turns to roll the dice and move around the board.
3. If you land on a space with a basket, pick up a Fraction Frenzy card and ask a friend to read you the question. If you answer the question correctly, you move forward one extra space!
4. The first person to get to the end of the forest safely wins!

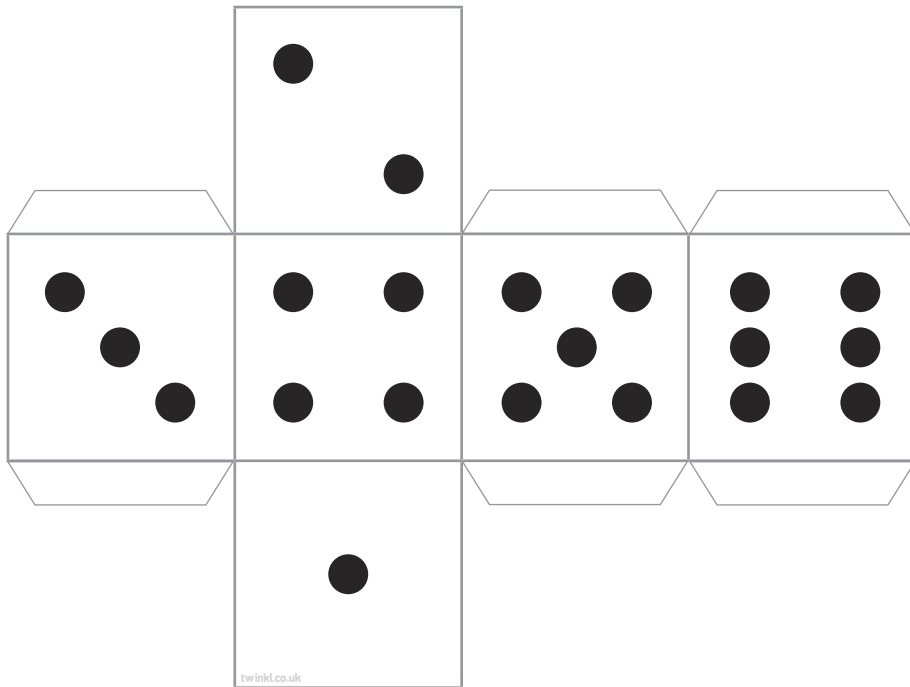
**Who will get there first?**

# Fraction Forest!

Counters for the game:



Dice:





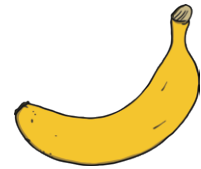
The Big Bad Wolf is 18 years old. Little Red Riding Hood is half his age. How old is Little Red Riding Hood?

**Answer:**  
 $\frac{1}{2}$  of 18 = 9 years old



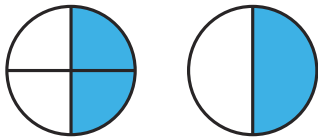
Little Red Riding Hood picks 22 yellow and red flowers for grandma.  $\frac{1}{2}$  of them are yellow. How many flowers are yellow?

**Answer:**  
 $\frac{1}{2}$  of 22 = 11 yellow flowers



Grandma has 16 bananas. She shares them equally with Little Red Riding Hood, the wolf, the woodcutter and herself. How many do they get each?

**Answer:**  
 $\frac{1}{4}$  of 16 = 4 bananas each



Two quarters is the same as one half.

**True or false?**

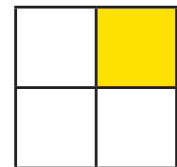
**Answer:**  
True.  $\frac{1}{2}$  is the same (or equivalent to)  $\frac{2}{4}$ .



Little Red Riding Hood has a birthday cake. She says "I'll eat the bigger half."

**Can she do that?**

**Answer:**  
No, it is not possible to have a 'bigger half' because  $\frac{1}{2}$  means two equal pieces.



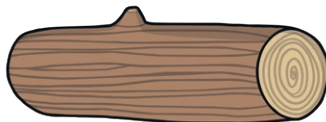
Which fraction is shaded?

**Answer:**  
 $\frac{1}{4}$  is shaded.



Grandma has 12 biscuits. She eats  $\frac{1}{4}$  of them. How many biscuits did she eat?

**Answer:**  
 $\frac{1}{4}$  of 12 = 3



The woodcutter cuts 8 logs in half. How many logs will there be now?

**Answer:**  
8 logs cut into two pieces would make 16 logs altogether.



The wolf finds 4 halves of an apple in the basket. How many whole apples does that make?

**Answer:**  
Four halves makes 2 whole apples.

Start

Finish!

1

2

3

4

5

6

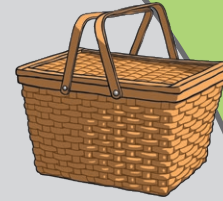


13

14

15

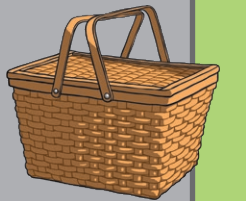
16



27

26

25



24

23

12

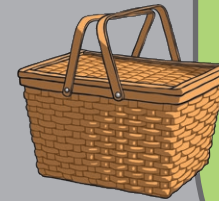
17

11



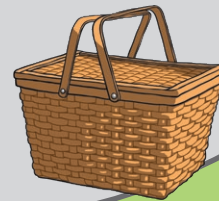
18

19



9

8



20

21

22

